



THE JOURNAL OF CLINICAL PSYCHIATRY

THE OFFICIAL JOURNAL OF THE AMERICAN SOCIETY OF CLINICAL PSYCHOPHARMACOLOGY

Supplementary Material

Article Title: Negative Schema and Rumination as Mediators of the Relationship Between Childhood Trauma and Recent Suicidal Ideation in Patients With Early Psychosis

Author(s): Yin Cui, MD, PhD; Sung-Wan Kim, MD, PhD; Bong Ju Lee, MD, PhD; Jung Jin Kim, MD, PhD; Je-Chun Yu, MD; Kyu Young Lee, MD, PhD; Seunghee Won, MD, PhD; Seung-Hwan Lee, MD, PhD; Seung-Hyun Kim, MD, PhD; Shi Hyun Kang, MD, PhD; Euitae Kim, MD, PhD; Yan Hong Piao, MD; Nam-In Kang; and Young-Chul Chung, MD, PhD

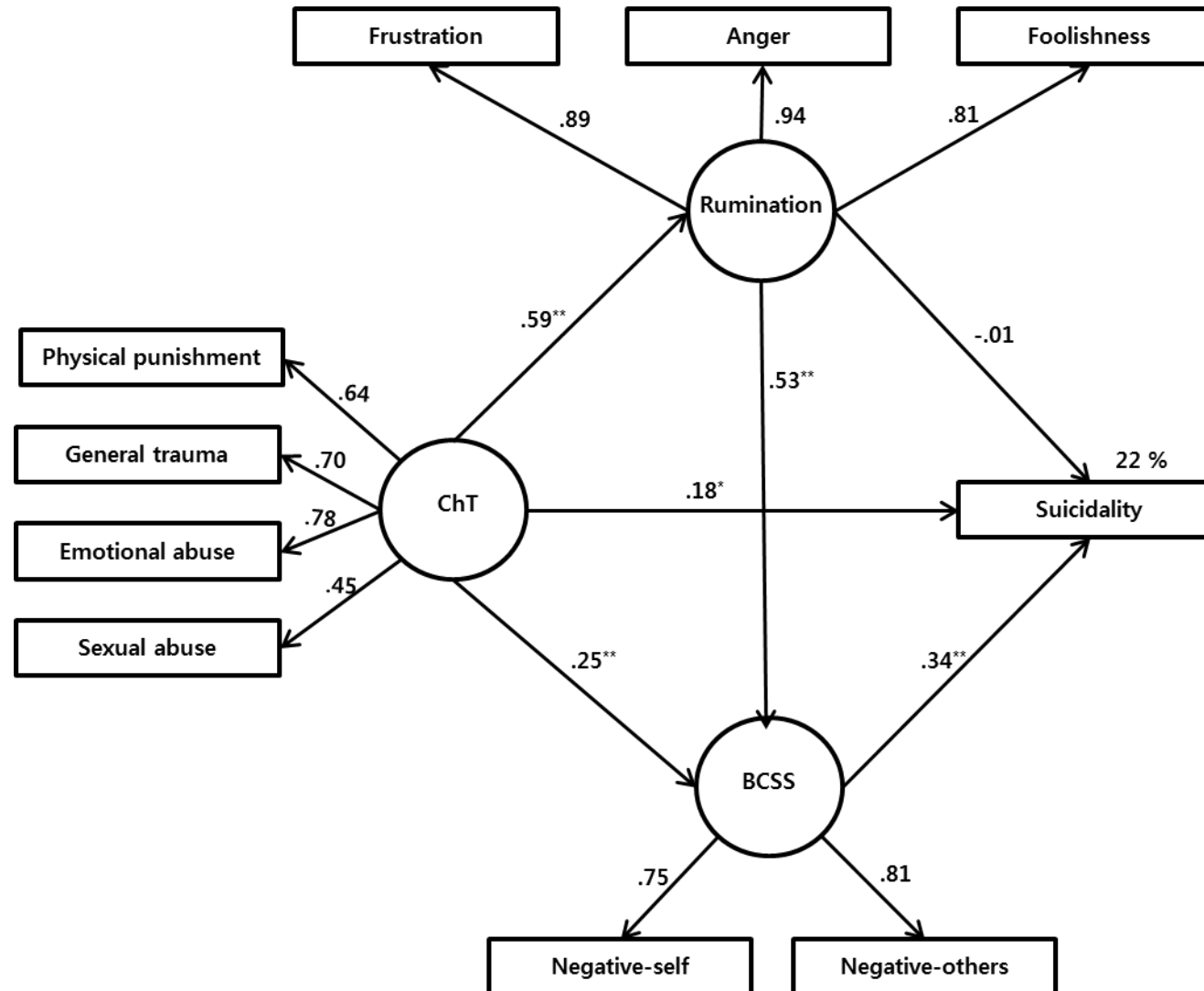
DOI Number: <https://doi.org/10.4088/JCP.17m12088>

List of Supplementary Material for the article

1. [Figure 1](#) Rumination and negative schema as moderators of the association between ChT and suicidality

Disclaimer

This Supplementary Material has been provided by the author(s) as an enhancement to the published article. It has been approved by peer review; however, it has undergone neither editing nor formatting by in-house editorial staff. The material is presented in the manner supplied by the author.



Supplementary Figure 1. Rumination and negative schema as moderators of the association between ChT and suicidality. Structural equation modeling: rectangles represent observed variables; circles, unobserved variables. Numbers by single-headed arrows reflect standardized path efficiency. The percentage values represent the amount of explained variance by predictors. Structural model fit indices: chi-square = 68.35; D.F = 30; CFI = 0.97; TLI = 0.96; RMSEA = 0.07; SRMR = 0.05; $p < 0.001$. BCSS, Brief Core Schema Scales; ChT, Childhood trauma. * $p < 0.05$, ** $p < 0.01$.