

## **Supplementary Material**

**Article Title:** Meta-Analysis of the Prevalence of Major Depressive Disorder Among Older Adults With Dementia

**Author(s):** M. Selim Asmer, MD; Julia Kirkham, MD; Hailey Newton, BSc; Zahinoor Ismail, MD; Heba Elbayoumi, BSc, Pharm; Roxanne H. Leung, MSc; and Dallas P. Seitz MD, PhD, FRCPC

**DOI Number:** <https://doi.org/10.4088/JCP.17r11772>

### **List of Supplementary Material for the article**

1. [Figure 1](#) Search Terms Used in Electronic Database Search
2. [Figure 2](#) Funnel Plot of the Prevalence of Major Depressive Disorder in Dementia
3. [Figure 3](#) Forest Plot of the Prevalence of Major Depressive Disorder (MDD) in Dementia by Diagnostic Criteria for MDD
4. [Figure 4](#) Forest Plot of Prevalence of Major Depressive Disorder in Dementia by Dementia Severity
5. [Figure 5](#) Forest Plot of the Prevalence of Major Depressive Disorder according to Clinical Dementia Rating Scale Scores.
6. [Figure 6](#) Forest Plot of the Prevalence of Major Depressive Disorder in Dementia by Setting of Study
7. [Figure 7](#) Forest Plot of the Prevalence of Major Depressive Disorder in Dementia by Continent of Study

### **Disclaimer**

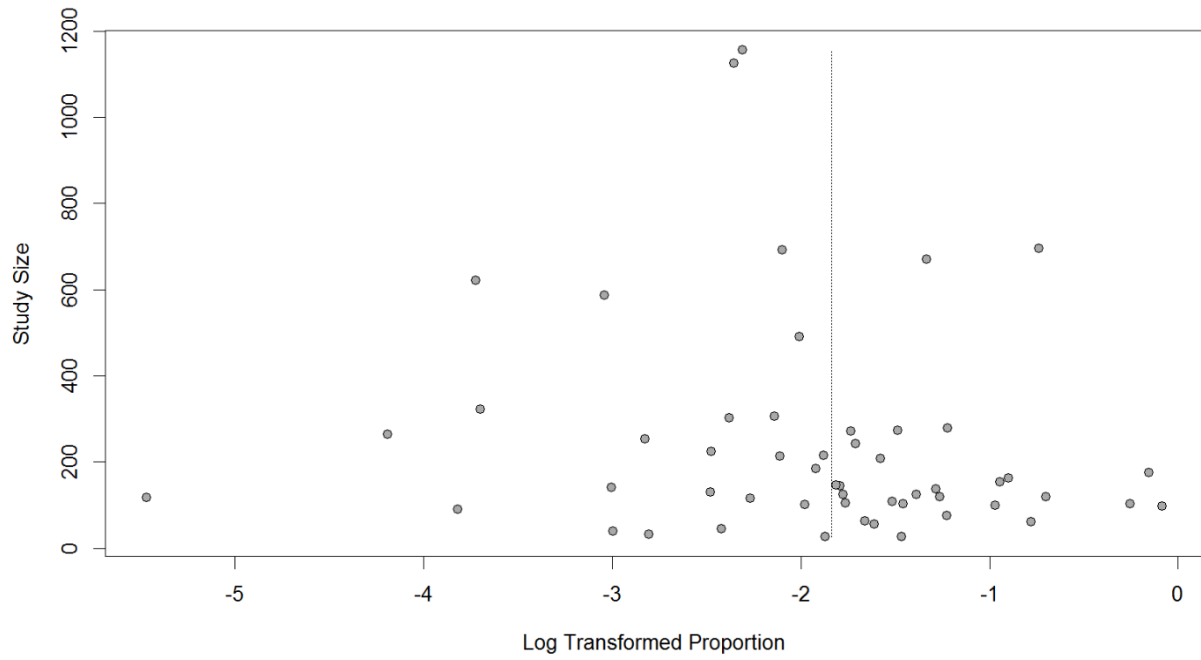
This Supplementary Material has been provided by the author(s) as an enhancement to the published article. It has been approved by peer review; however, it has undergone neither editing nor formatting by in-house editorial staff. The material is presented in the manner supplied by the author.

### **Supplementary eFigure 1: Search Terms Used in Electronic Database Search**

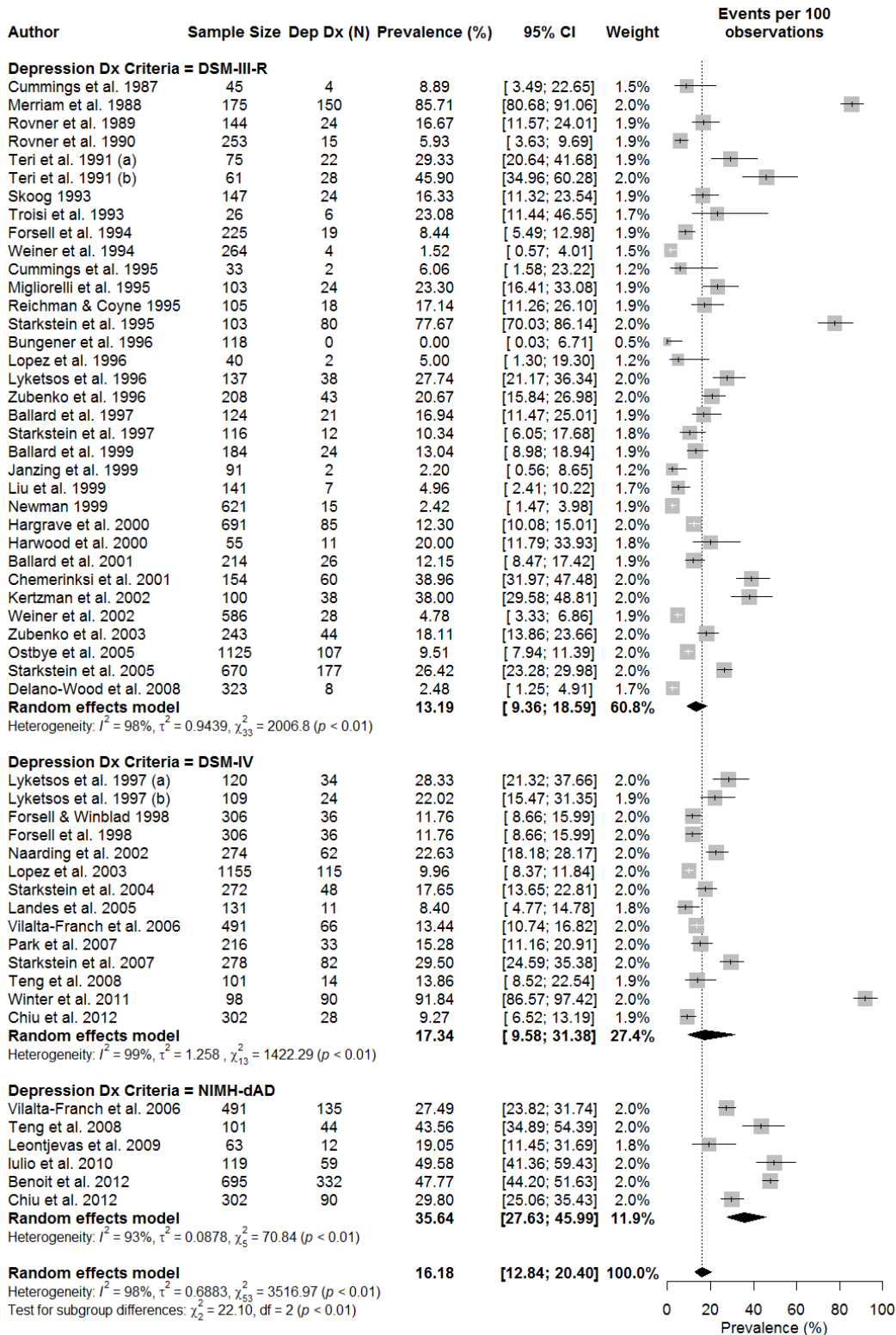
1. exp Depressive Disorder/di [Diagnosis]
2. exp Depressive Disorder/ep [Epidemiology]
3. exp Depression/et [Etiology]
4. exp Depressive Disorder, Major/di [Diagnosis]
5. exp Depressive Disorder/et [Etiology]
6. exp Depressive Disorder, Major/ep [Epidemiology]
7. exp Depression/di [Diagnosis]
8. exp Depression/ep [Epidemiology]
9. exp Depression/cl [Classification]
10. depression.mp.
11. "major depression".mp.
12. "major depressive disorder".mp.
13. exp Alzheimer Disease/co [Complications]
14. exp Alzheimer Disease/di [Diagnosis]
15. exp Alzheimer Disease/ep [Epidemiology]
16. exp Dementia/di [Diagnosis]
17. exp Dementia/ep [Epidemiology]
18. exp Dementia, Vascular/di [Diagnosis]
19. exp Dementia, Vascular/ep [Epidemiology]
20. exp Dementia, Multi-Infarct/di [Diagnosis]
21. exp Dementia, Multi-Infarct/ep [Epidemiology]
22. exp Dementia/co [Complications]
23. exp Dementia/cl [Classification]
24. Alzheimer.mp.
25. dementia.mp.

26. "dementia with Lewy bodies".mp.
27. "Lewy body dementia".mp.
28. "Parkinson's disease dementia".mp.
29. exp Prevalence/
30. exp Retrospective Studies/
31. exp Cross-Sectional Studies/
32. prevalence.mp.
33. frequency.mp.
34. exp Incidence/
35. incidence.mp.
36. exp Epidemiology/
37. "prevalence studies".mp.
38. 1 or 2 or 3 or 4 or 5 or 6 or 7 or 8 or 9 or 10 or 11 or 12
39. 13 or 14 or 15 or 16 or 17 or 18 or 19 or 20 or 21 or 22 or 23 or 24 or 25 or 26 or 27 or 28
40. 29 or 30 or 31 or 32 or 33 or 34 or 35 or 36 or 37
41. 38 and 39 and 40

**Supplementary eFigure 2:** Funnel Plot of the Prevalence of Major Depressive Disorder in Dementia

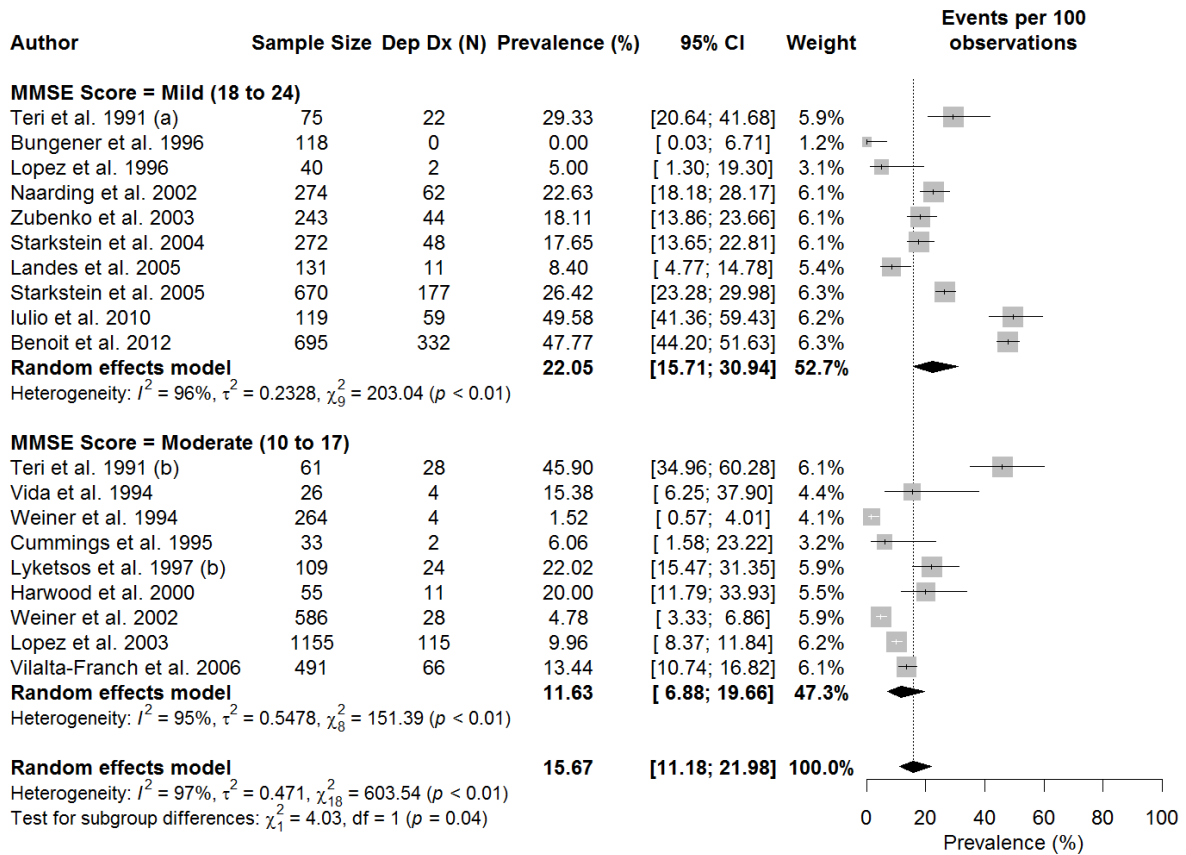


**Supplementary eFigure 3: Forest Plot of the Prevalence of Major Depressive Disorder (MDD) in Dementia by Diagnostic Criteria for MDD.**



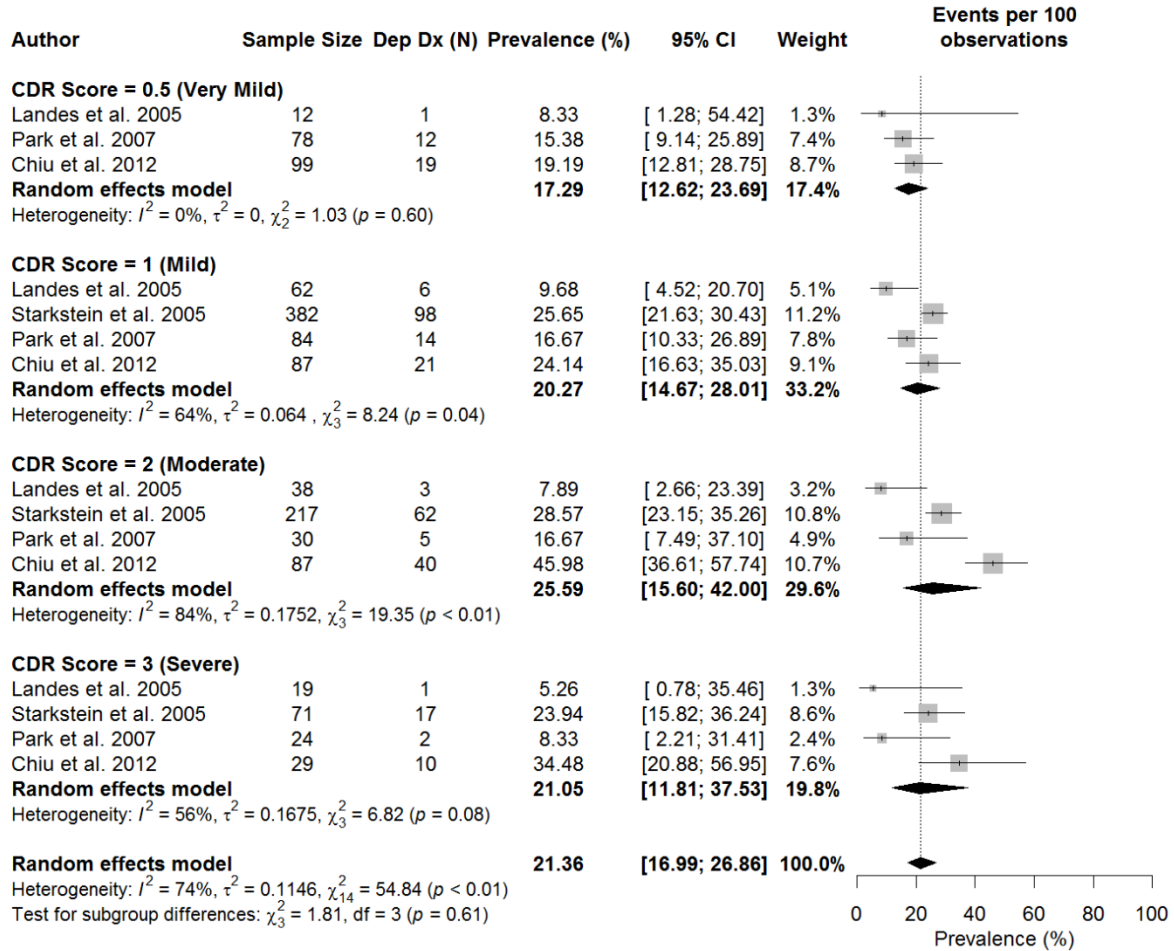
*Note:* Dep Dx (N): Number of individuals with a depression diagnosis; Depression Dx Criteria: Criteria used to diagnosis depression; DSM-III-R: Diagnostic and Statistics Manual of Mental Disorders, 3<sup>rd</sup> edition, Revised; DSM-IV: Diagnostic and Statistics Manual of Mental Disorders, 4<sup>th</sup> edition; NIMH-dAD: National Institute of Mental Health provisional criteria for depression in Alzheimer's disease.

**Supplementary eFigure 4:** Forest Plot of Prevalence of Major Depressive Disorder in Dementia by Dementia Severity.



Note: Dep Dx (N): Number of individuals with a depression diagnosis; MMSE: Mini-Mental State Examination

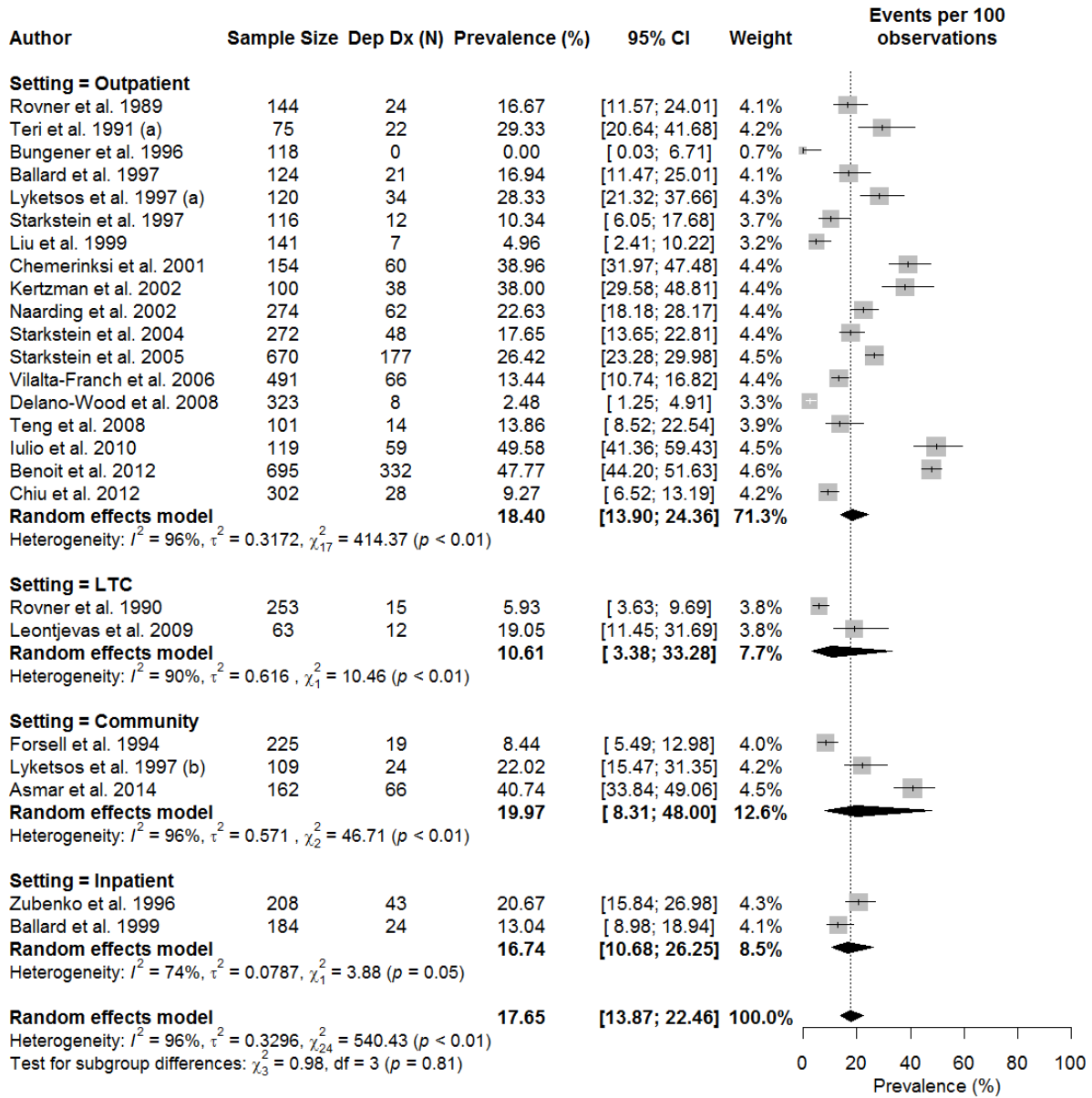
**Supplementary eFigure 5: Forest Plot of the Prevalence of Major Depressive Disorder according to Clinical Dementia Rating Scale Scores.**



*Abbreviations:* CDR: Clinical Dementia Rating; Dep Dx (N): Number of individuals with a depression diagnosis.

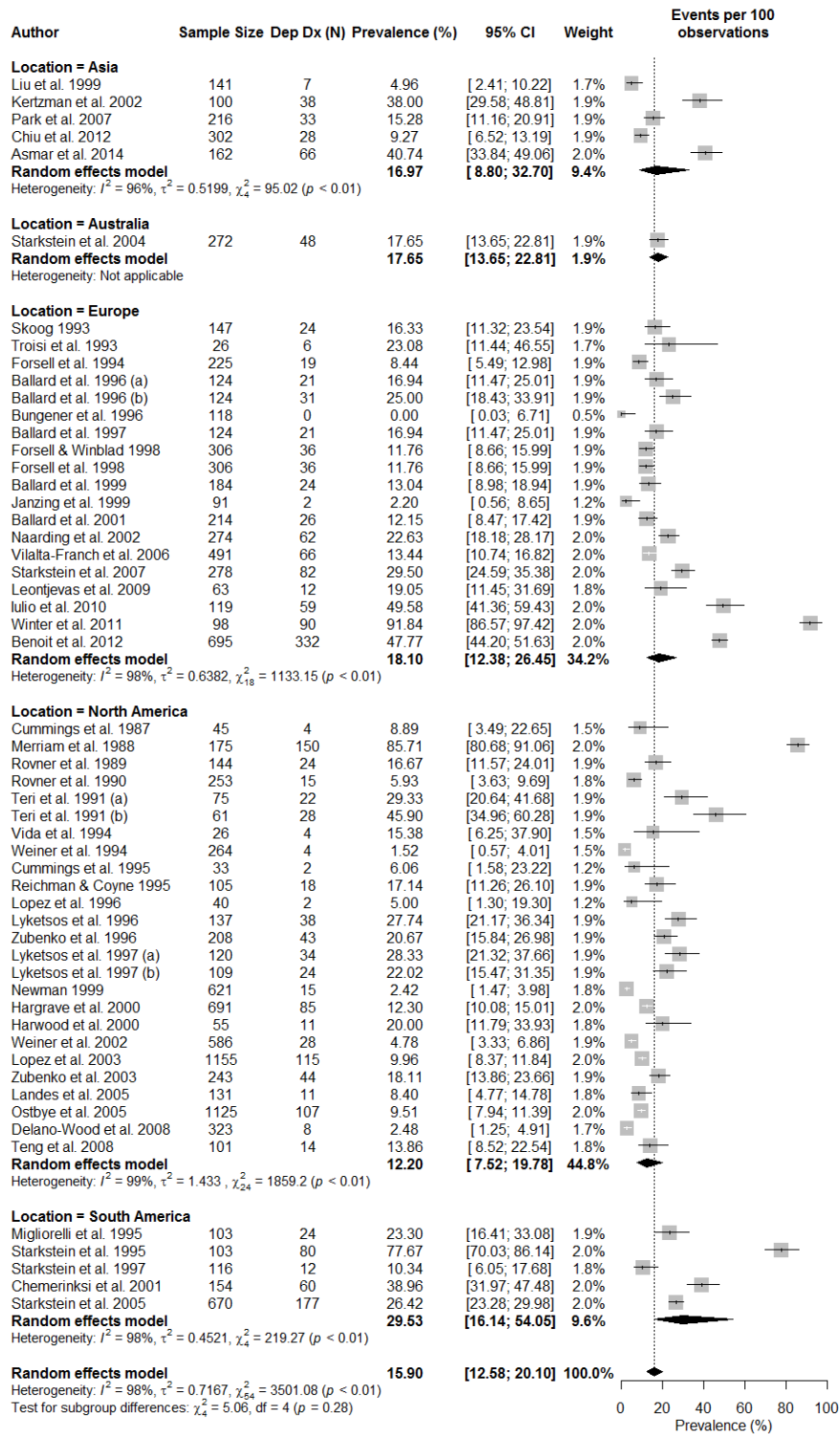


**Supplementary eFigure 6: Forest Plot of the Prevalence of Major Depressive Disorder in Dementia by Setting of Study.**



Note: Dep Dx (N): Number of individuals with a depression diagnosis; LTC: Long-term care.

**Supplementary eFigure 7: Forest Plot of the Prevalence of Major Depressive Disorder in Dementia by Continent of Study.**



Note: Dep Dx (N): Number of individuals with a depression diagnosis.