



THE JOURNAL OF CLINICAL PSYCHIATRY

THE OFFICIAL JOURNAL OF THE AMERICAN SOCIETY OF CLINICAL PSYCHOPHARMACOLOGY

Supplementary Material

Article Title: Patches: Established and Emerging Transdermal Treatments in Psychiatry

Author(s): Leslie Citrome, MD, MPH^{a,*}; Courtney M. Zeni, PhD^b; and Christoph U. Correll, MD^{c,d}

DOI Number: <https://doi.org/10.4088/JCP.18nr12554>

List of Supplementary Material for the article

1. [Figure 1](#) Layers of the Skin
2. [Table 1](#) Caregiver Preference for Patch Versus Capsule Formulation of Rivastigmine

Disclaimer

This Supplementary Material has been provided by the author(s) as an enhancement to the published article. It has been approved by peer review; however, it has undergone neither editing nor formatting by in-house editorial staff. The material is presented in the manner supplied by the author.

Supplementary Figure 1. Layers of the Skin

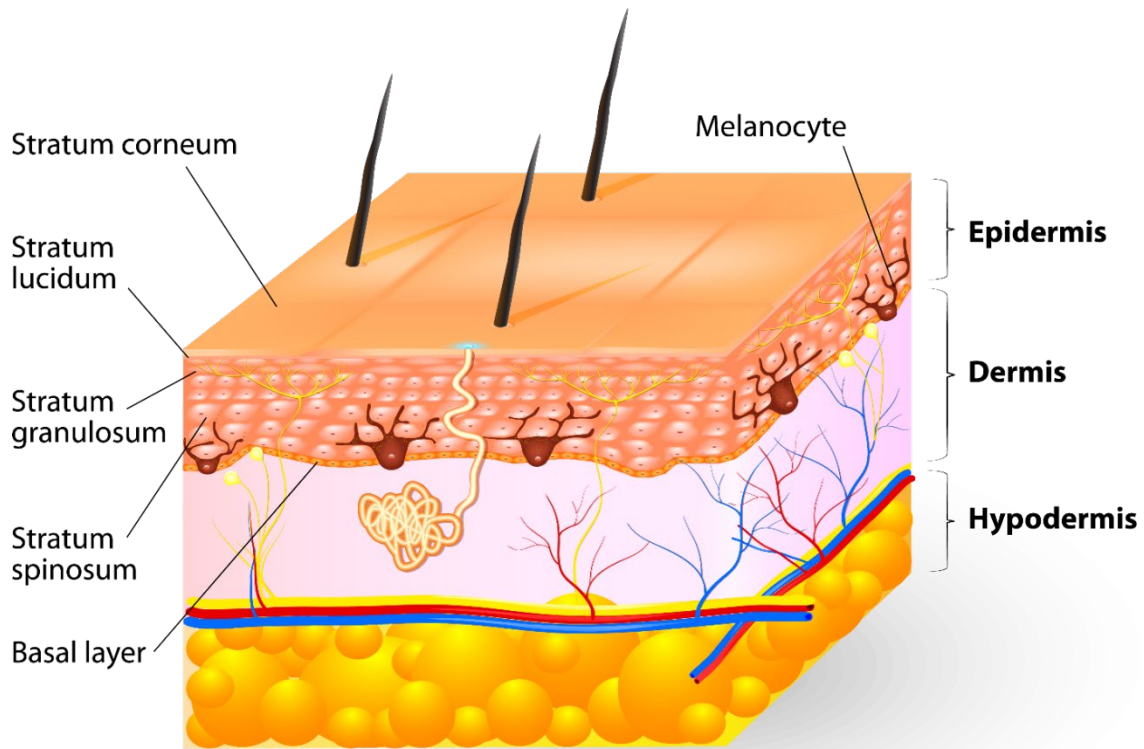


Photo source: iStock.com/ttsz

Supplementary Table 1. Caregiver Preference for Patch Versus Capsule Formulation of Rivastigmine⁵⁵

Caregiver Preference Category	N	Patch	Capsule
Ease of use	983	64%	36%
Following schedule	982	74%	26%
Overall	985	72%	28%

P<0.0001 for patch vs capsule in all categories.