



THE JOURNAL OF CLINICAL PSYCHIATRY

THE OFFICIAL JOURNAL OF THE AMERICAN SOCIETY OF CLINICAL PSYCHOPHARMACOLOGY

Supplementary Material

Article Title: Identification of High Mortality Risk Patients and Prediction of Outcomes in Delirium by Bispectral EEG

Author(s): Gen Shinozaki, MD; Nicholas L. Bormann, MD; Aubrey C. Chan, MD, PhD; Kasra Zarei; Nicholas A. Sparr; Mason Klisares; Sydney S. Jellison; Jonathan Heinzman; Elijah B. Dahlstrom; Gabrielle N. Duncan; Lindsey Gaul; Robert Wanzek; Ellyn Cramer; Charlotte G. Wimmel; Sayeh Sabbagh, MSW; Kumi Yuki, MD; Michelle Weckmann, MD; Thoru Yamada, MD; Matthew Karam, MD; Nicolas Noiseux, MD; Eri Shinozaki, MD; Hyunkeun Cho, PhD, Sangil Lee, MD; and John W. Cromwell, MD

DOI Number: <https://doi.org/10.4088/JCP.19m12749>

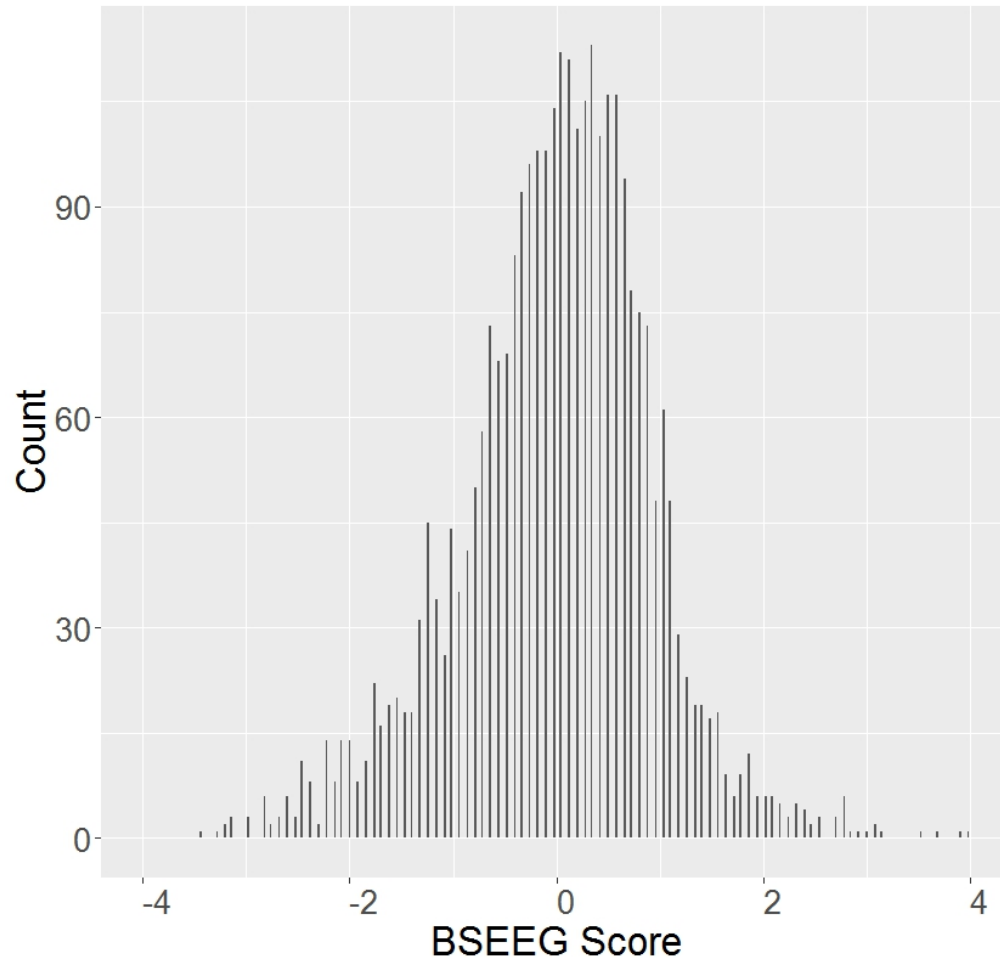
List of Supplementary Material for the article

1. [Figure 1](#) Distribution of BSEEG Scores
2. [Figure 2](#) Study participant Enrollment Flow Chart.

Disclaimer

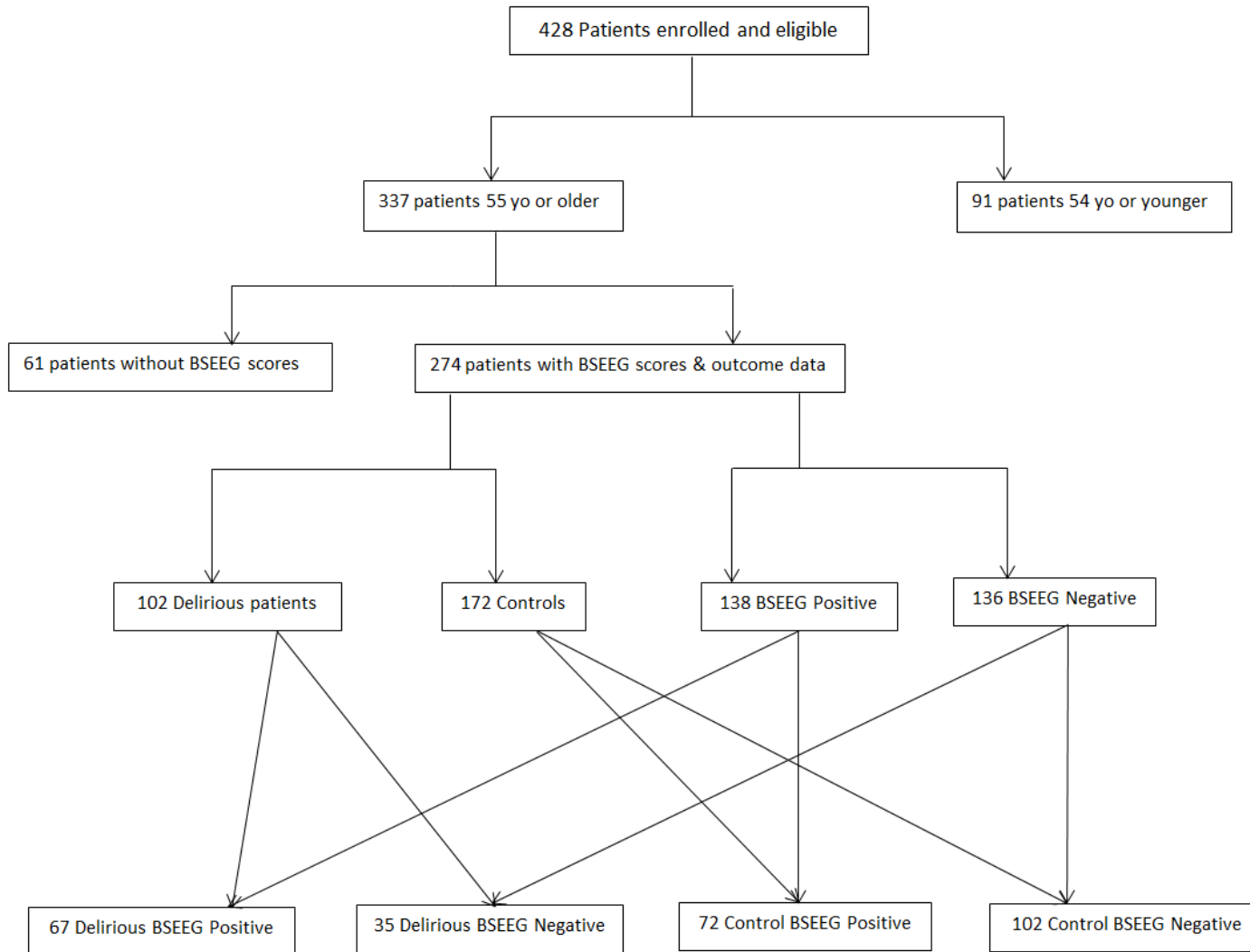
This Supplementary Material has been provided by the author(s) as an enhancement to the published article. It has been approved by peer review; however, it has undergone neither editing nor formatting by in-house editorial staff. The material is presented in the manner supplied by the author.

Supplementary Figure 1. Distribution of BSEEG Scores.



- a. Supplementary Figure 1. Distribution of BSEEG Scores.** Scores are based on a total of 2938 recordings from 428 patients of all age groups. The BSEEG score is defined as the number of standard deviations from the mean, with the mean being a score of 0.

Supplementary Figure 2. Study participant Enrollment Flow Chart.



a. Supplementary Figure 2. The study population was categorized in two ways: clinical delirium status and BSEEG score.